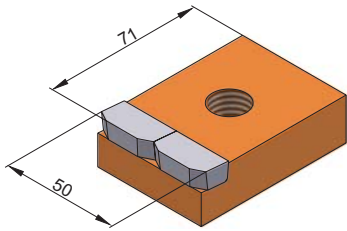
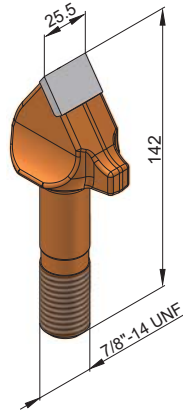


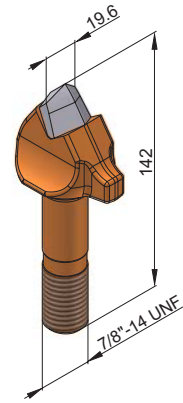
Bandit

→ **BFZ291**

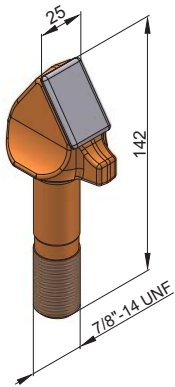
→ BFS70x50x22

→ **BFZ195**

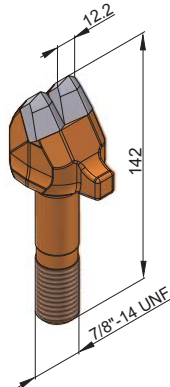
→ BFZ142x25-7/8"

→ **BFZ212**

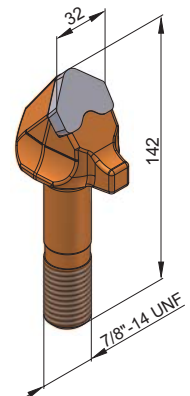
→ BFZ142x25-7/8"/5

→ **BFZ223**

→ BFZ142x25/HS

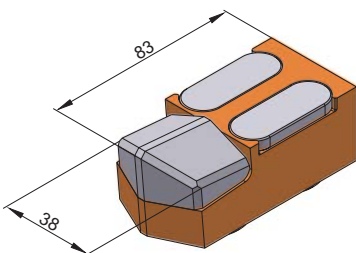
→ **BFZ232**

→ BFZ142x40-7/8"

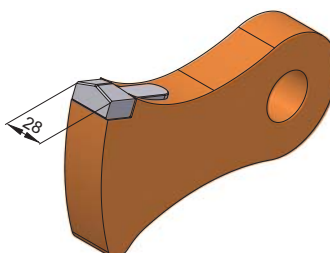
→ **BFZ262**

→ BFZ142x32-7/8"

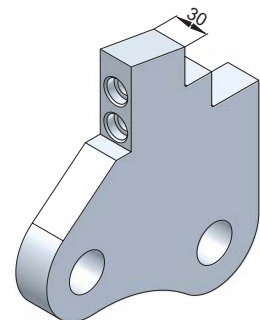
Duratech

→ **BFS142**

→ BFS45x40x83/2

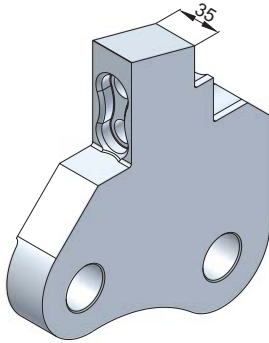
→ **BFS146**

→ BFS195x117x30/1

→ **BHS14**

→ BHS227x205x30

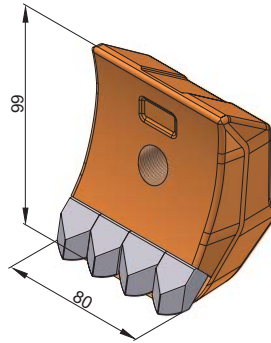
Duratech



→ **BHS32**

→ BHS232x202x35

Jenz

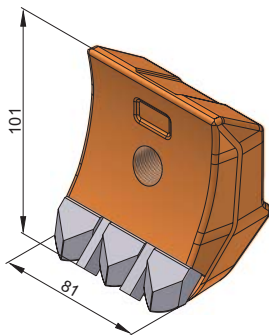


→ **BFS184**

→ BFS99x80/2

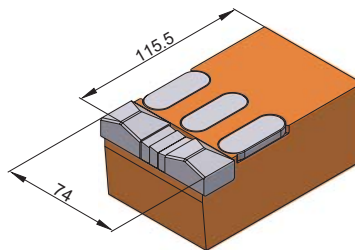


Morbark



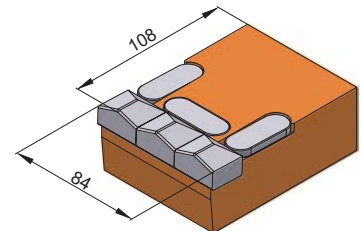
→ **BFS23/1**

→ BFS103x80/1



→ **BFS219**

→ BFS116x74x52/1



→ **BFS236**

→ BFS108x84x45



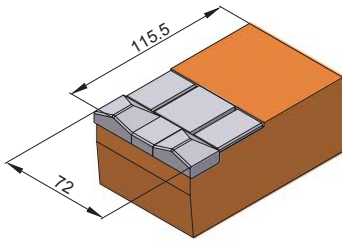
Service number + 49 (0) 74 22 / 5 65-182

Fax + 49 (0) 74 22 / 5 65-181

www.betek.de · info@betek.de

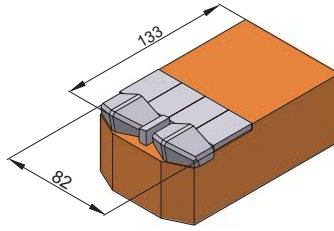


Morbark



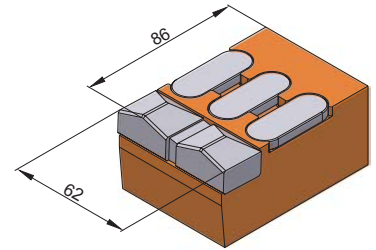
→ **BFS253**

→ BFS116x74x52/2



→ **BFS274**

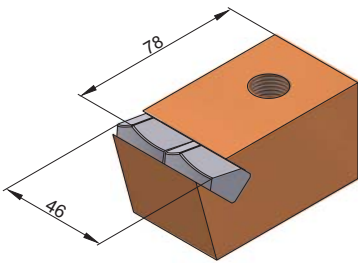
→ BFS80x58x133/1



→ **BFS88**

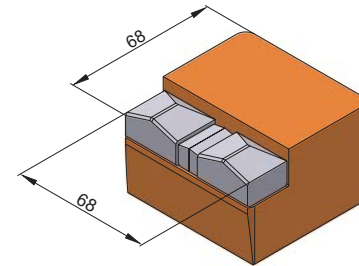
→ BFS86x60/1

Plaisance



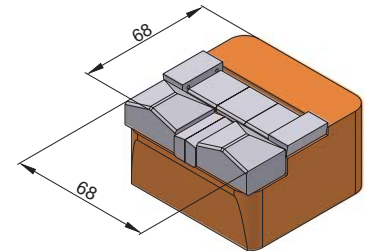
→ **BFS15**

→ BFS40x40/A/78



→ **BFS121**

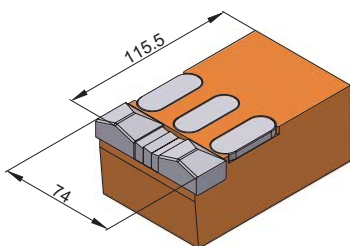
→ BFS70x70x46/3



→ **BFS265**

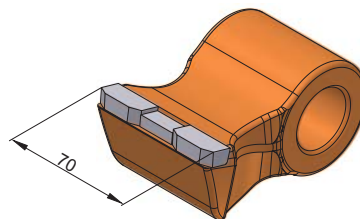
→ BFS70x70x46/7

Seppi



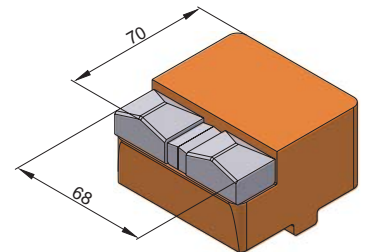
→ **BFS335**

→ BFS116x74x52/4



→ **BFS18**

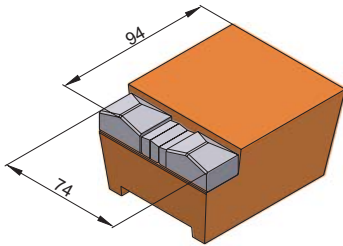
→ BFS105x70x56



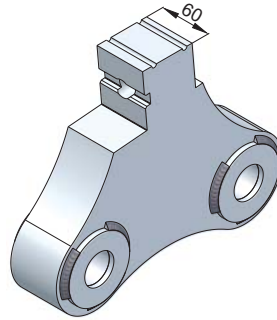
→ **BFS153**

→ BFS70x70x46/1

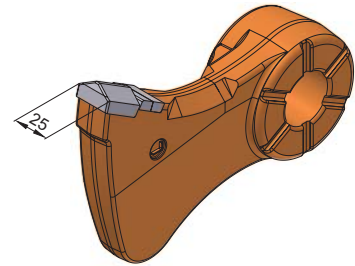
Vermeer

→ **BFS286**

→ BFS94x78x50

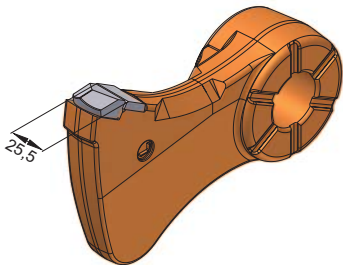
→ **BHS15**

→ BHS298x241x60

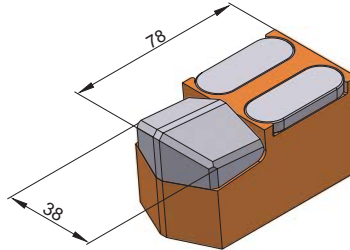
→ **BFS266**

→ BFS200x137x49/L/2

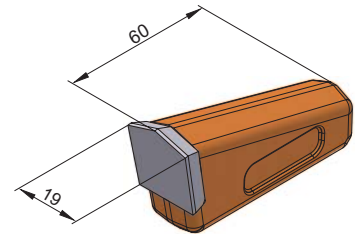
Weld-on teeth

→ **BFS418**

→ BFS200x137x49/L/4

→ **BFS21**

→ BFS40x40x78/3

→ **BFZ133**

→ BFZ60x19/2

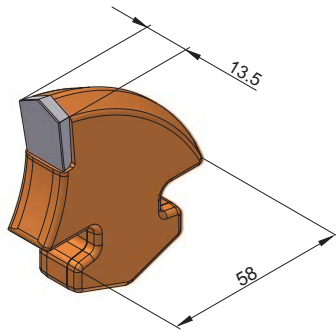


Service number + 49 (0) 74 22 / 5 65-182

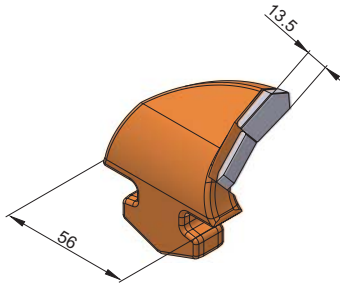
Fax + 49 (0) 74 22 / 5 65-181

www.betek.de · info@betek.de

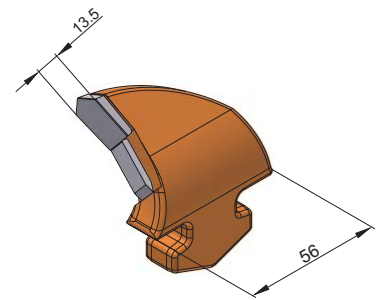

Rayco

→ **BFS304**

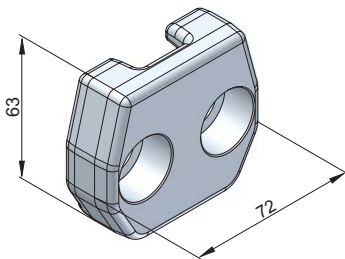
→ BFS65x58x14

→ **BFS305**

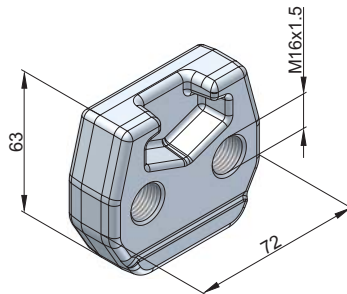
→ BFS65x57x14/R

→ **BFS306**

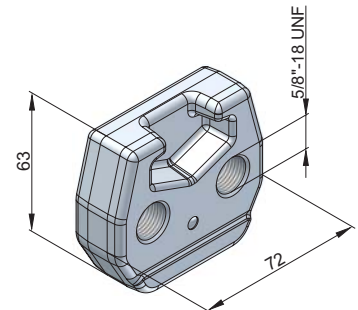
→ BFS65x57x14/L

→ **BHS43**

→ BHS72x63x25/S

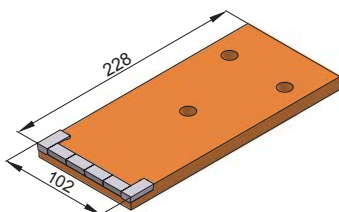
→ **BHS44**

→ BHS72x63x25/G

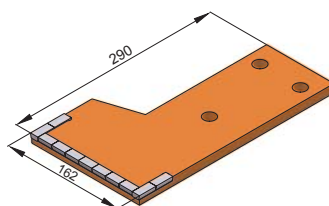
→ **BHS46**

→ BHS72x63x25/G/Z

Sandberger / Neuson

→ **BFS221**

→ BFS220x100x12

→ **BFS258**

→ BFS290x162x12/Re